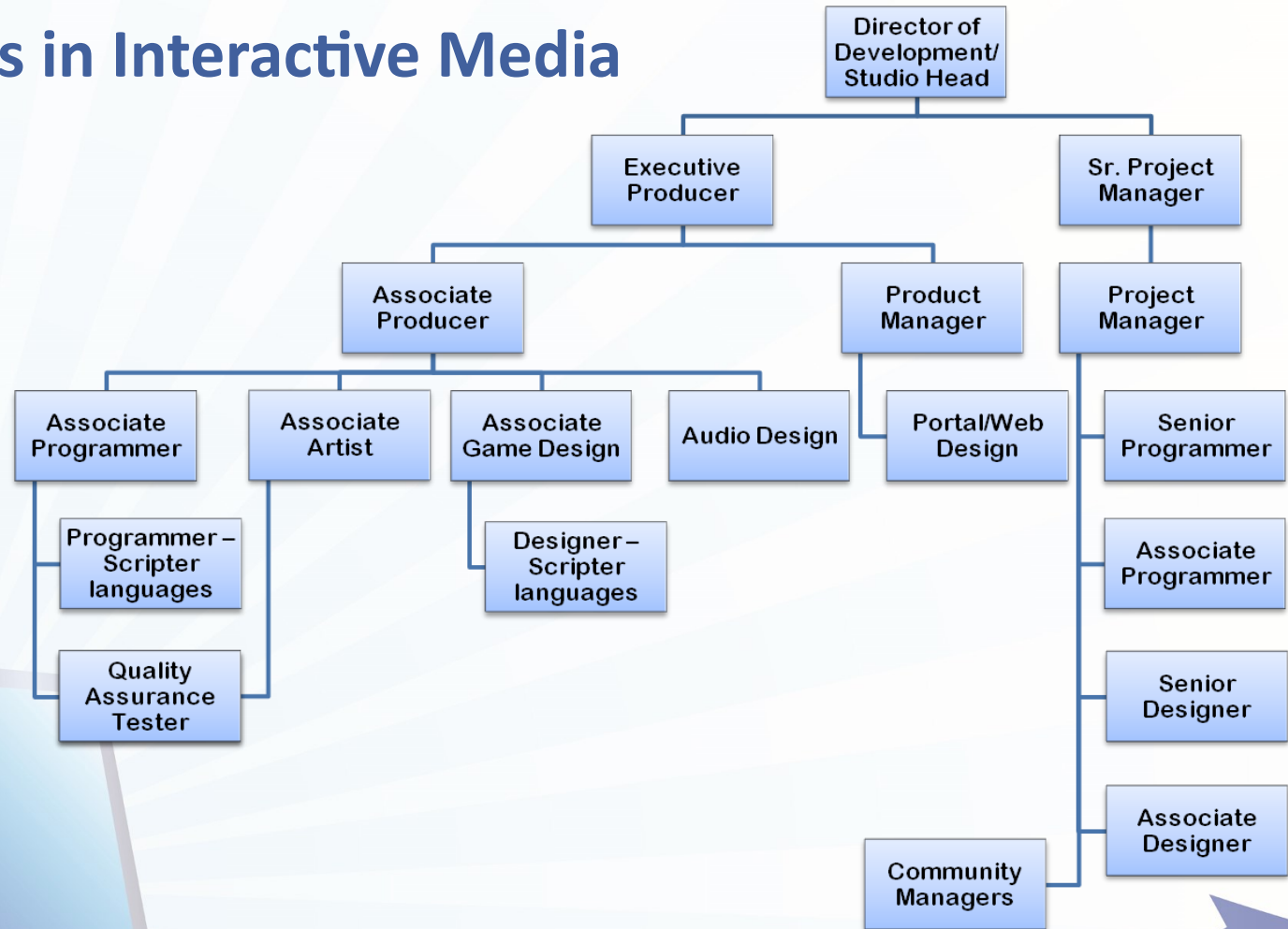


Career Paths in Interactive Media



Hourly Wage Ranges	
	Starting → Experience/Education
Production	\$10.45 → 57.34
Community Managers, Associate Producer, Executive Producer, Director of Development / Studio Head Designer, Game Designers, Design Scripter, Audio Design	\$17.78 → \$54.58
Programming (aka Engineering) Programmers, Programmer Scripter Language	\$33.50 → \$79.22
Artist and Associate Artist	\$17.98 → \$50.61
Project Management, Project Manager, Sr. Project Manager	\$17.78 → \$54.58
Product Management, Quality Assurance, Portal/Web Design, Product Manager	\$21.89 → \$61.68

Chart Source: *enterpriseSeattle/Workforce Development Council*
 Wages from *EMSI Career Coach* data

A wide range of certificates and degrees are offered by King County's community and technical colleges and private training providers. To learn more about the training programs available, visit www.checkoutcollege.com or www.careerbridge.wa.gov

350+

King County Interactive Media Industry Businesses

+28.6%

% jobs change (2014-2024)

14,129

Estimated replacement demand openings* (2014-2024)

\$200,003

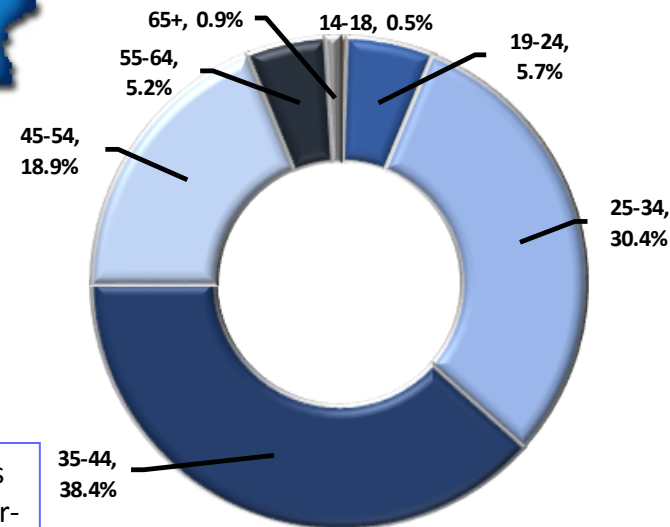
Average Annual Earnings (2014)**



Interactive media is a fast-growing sector that includes video and computer game design and production, internet publishing, smartphone/tablet app design and a variety of other digital media production outlets. Generally viewed as a subsector of Information Technology, this sector branches out into the creative arts to build experiences for a wide range of audiences.

With over 66,000 sector-related jobs in King County, our region is one of the largest producers of interactive media in the country. Factoring in a 28.6% growth rate over the next years, occupations with IM applications are projected to be some of the fastest growing in terms of adding new jobs.

Industry Workers by Age



Industry Workers by Education Level

